



  
**INFINITE**  
**AUDIO VISUAL**  
LIGHTING • SOUND • VISION • CCTV

# *Digital Signage*

# Contents

<i>Why choose digital signage?</i>	3
<i>Digital Kiosk</i>	4
<i>Why choose an Interactive Kiosk?</i>	6
<i>Digital Interactive Kiosk</i>	7
<i>Kiosk Accessories</i>	9
<i>External Floor Stand</i>	10
<i>Digital Brochure Stand</i>	12
<i>Digital Poster Frame</i>	14
<i>Digital Signage Screens</i>	18
<i>Video Wall Solutions</i>	20





# Why choose digital signage?

Digital Signage helps businesses increase sales, strengthen their brand and streamline their information delivery. Digital signage can be used to present special offers, product/service advertising, customer guidance and entertainment with a greater impact than traditional signage can. In the long term, digital signage can even be a more cost effective option than traditional 'printed' signage.

It is easy to react to any changes – the content of a digital signage display can be updated with ease (remotely if required). For every price or product change you can update the display without having to have new materials printed. This also reduces timescales for the business as well as there will be no wait time whilst materials are printed, dispatched and then the changes actioned.

A multi-site operator could streamline their business whilst reducing costs as well. They would no longer be required to print multiple copies of their intended advertising, ship it to their sites and then wait for a member of staff to display it. Instead, digital signage displays can be updated remotely at the touch of a button – either as an update across the board or individually by site.



# Digital Kiosk

*Available in either black or white and various sizes – 28" to 58".*



## Product Description:-

Our Digital Kiosk is a freestanding unit with a high-quality display containing the latest 4K (Ultra High Definition) technology to deliver unbeatable picture quality and the ability to showcase UltraHD Media including images, video and animation. With 3 x HDMI 2.0 inputs that support 60Hz refresh rate and 4K resolution you can deliver multiple sources with ease.

The digital kiosk is packed with useful features that have been designed to make things easier for you and your customers:-

- Create playlists of favourite content (pictures/videos) for automatic playback.
- TIMER offers an auto On/Off function to save energy.
- SMART HDMI means that the kiosk will sleep or wake up depending on the presence of a HDMI signal.
- Compatible with Windows/Android players for ultimate flexibility.
- Lockable rear door for increased security and protection of the equipment.
- Space for the installation of players in the back of the unit.
- Aluminium profile for mounting of additional accessories of which a wide range is available to personalise the unit to your needs (See Accessories).





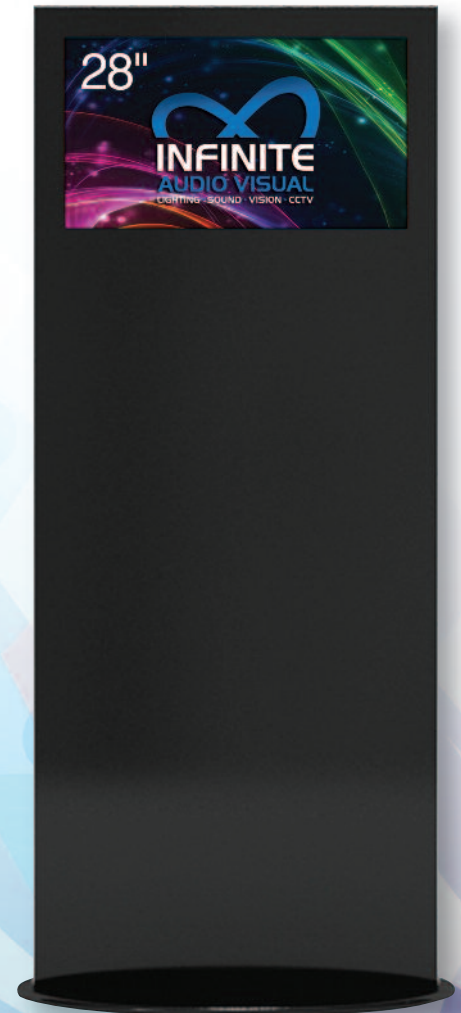
## Specification:-

Features	Specifications	Model ID							
		DK-28W	DK-28B	DK-40W	DK-40B	DK-50W	DK-50B	DK-58W	DK-58B
Colour		White	Black	White	Black	White	Black	White	Black
Panel	Size	28"	28"	40"	40"	50"	50"	58"	58"
	Aspect Ratio	16:9							
	Resolution	3840 x 2160 Pixels							
	Refresh Rate	60 Hz		120 Hz					
	Static Contrast	1,000:1		5,000:1		4,000:1		4,000:1	
	Brightness	300 cd/m²		350 cd/m²		350 cd/m²		350 cd/m²	
	Response Time	1.5 ms		8.5 ms		9.5ms		9.5ms	
	Viewing Angle	170/160		178/178		178/178		178/178	
Power	Power Supply	100-240V ~ 50/60Hz							
	Power Consumption	40W		65W		110W		135W	
	Stand-by Power Consumption	<0.50 W							
Environment	Lead Presence	Yes							
	Mercury	0mg							
Connections	Max. Input Signal	3840 x 2160 @ 60 Hz							
	HDMI	3 x HDMI (V 2.0) (HDCP 2.2) 480P/480I/576P/576I/720P/1080I/1080P/2160P @ 60 Hz							
	USB Media Player	2 x USB 2.0							
	VGA	1							
	VGA Audio In	1							
	Component	1 x YpBbPr 480P/480I/576P/576I/720P/1080I/1080P							
	AV	1							
	Digital Audio Output	1 x Co-Axial							
Speakers	Audio Out	2 x 10W							
Weight and Dimensions	Product Height	182cm		182cm		182cm		182cm	
	Product Width	81cm		67cm		81cm		92cm	
	Product Depth	45cm		44cm		45cm		45cm	
	Net Weight	39kg		35kg		43kg		50kg	
	Gross Weight	47kg		47kg		57kg		65kg	
	Package Dimension	194 x 77 x 16cm		194 x 77 x 16cm		194 x 90 x 16cm		194 x 100 x 16cm	

# Why choose an Interactive Kiosk?

No longer simply a screen on the wall, interactive digital kiosks offer many advantages in the way they engage with your audience to improve service whilst also reducing your business costs.

- Attract the attention of passers-by with general information and entice them to touch the screen and find out more about specific services/products of interest to them.
- Self-service content reduces perceived wait time by allowing the customer to instantly access the information they're looking for.
- Interactive kiosks reduce the need for personnel to carry out repetitive tasks such as:
  - Booking classes in a Gym;
  - Making a restaurant reservation;
  - Ordering food in a restaurant;
  - Placing an order within a store;
  - Wayfinding within Shopping Centres or other locations.
- Interactive kiosks can be connected to a point-of-sale system and receipt printer to create a self-service transactional kiosk.
- Interactive kiosks can be used to collect valuable market data from your customers, which will give your business additional insight and opportunities.
- Interactive kiosks are typically low maintenance.





# Digital Interactive Kiosk

*Available in either black or white and various sizes – 28" to 58".*

## Product Description:-

Building on the success of our standard digital kiosk, the digital Interactive Kiosk is a goes one step further and features 6pt touch technology in the display, whilst still being equipped with the same great features as our standard kiosk, to make the unit truly interactive. Still equipped with a 4K panel, it uses the latest technology to deliver unbeatable picture quality and the ability to showcase UltraHD Media including images, video and animation. With 3 x HDMI 2.0 inputs that support 60Hz refresh rate and 4K resolution you can deliver multiple sources with ease.



The digital kiosk is packed with useful features that have been designed to make things easier for you and your customers

- **Create playlists of favourite content (pictures/videos) for automatic playback.**
- **TIMER offers an auto On/Off function to save energy.**
- **SMART HDMI means that the kiosk will sleep or wake up depending on the presence of a HDMI signal.**
- **Compatible with Windows/Android players for ultimate flexibility.**
- **Lockable rear door for increased security and protection of the equipment.**
- **Space for the installation of players in the back of the unit.**
- **Aluminium profile for mounting of additional accessories of which a wide range is available to personalise the unit to your needs (See Accessories).**

## Specification:-

Features	Specifications	Model ID							
		DKI-28W	DKI-28B	DKI-40W	DKI-40B	DKI-50W	DKI-50B	DKI-58W	DKI-58B
Colour		White	Black	White	Black	White	Black	White	Black
Panel	Size	28"	28"	40"	40"	50"	50"	58"	58"
	Aspect Ratio	16:9							
	Resolution	3840 x 2160 Pixels							
	Refresh Rate	60 Hz		120 Hz					
	Static Contrast	1,000:1		5,000:1		4,000:1		4,000:1	
	Brightness	300 cd/m²		350 cd/m²		350 cd/m²		350 cd/m²	
	Response Time	1.5 ms		8.5 ms		9.5ms		9.5ms	
	Viewing Angle	170/160		178/178		178/178		178/178	
Power	Power Supply	100-240V ~ 50/60Hz							
	Power Consumption	40W		65W		110W		135W	
	Stand-by Power Consumption	<0.50 W							
Environment	Lead Presence	Yes							
	Mercury	0mg							
Connections	Max. Input Signal	3840 x 2160 @ 60 Hz							
	HDMI	3 x HDMI (V 2.0) (HDCP 2.2) 480P/480I/576P/576I/720P/1080I/1080P/2160P @ 60 Hz							
	USB Media Player	2 x USB 2.0							
	VGA	1							
	VGA Audio In	1							
	Component	1 x YpBbPr 480P/480I/576P/576I/720P/1080I/1080P							
	AV	1							
	Digital Audio Output	1 x Co-Axial							
Speakers	Audio Out	2 x 10W							
Touch	Interface	USB							
	Technology	Infrared							
	Points	10		6					
Weight and Dimensions	Protection Glass	N/A		4 mm					
	Product Height	182cm		182cm		182cm		182cm	
	Product Width	81m		67cm		81cm		92cm	
	Product Depth	45cm		44cm		45cm		45cm	
	Net Weight	39kg		41kg		51kg		60kg	
	Gross Weight	47kg		53kg		64kg		75kg	
	Package Dimension	194 x 77 x 16cm		194 x 77 x 16cm		194 x 90 x 16cm		194 x 100 x 16cm	



# Kiosk Accessories

We have a full range of accessories available to personalise the kiosk units:-

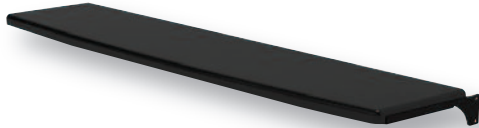
① Top Banner



② Side Shelf



③ Front/Back Shelf



④ Protection Ring



⑤ Mobile Base with lockable wheels



Flightcase

It is also possible to have the units fully vinyl wrapped – please contact our sales team for more information about this service.



# External Floor Stand

*Available in multiple sizes from 22" to 84".*

Our durable, high bright external floor stands have been designed to deliver crisp digital content in an external environment.

## Features:-

- Uses branded Samsung/LG LCD Panels
- Full HD Screen 1920 x 1080P
- High Brightness
- Built-in speaker
- Built-in cooling fans
- Tempered glass above LCD panel
- Anti-theft design – built-in security lock.
- Compatible with Android/Windows OS or standalone updating via direct USB
- Supports 3G / 4G / WIFI / LAN for networking purposes.



## Specification:-

Features	Specifications	Model ID	
		EFS-43	EFS-49
Panel	Size	43"	49"
	Aspect Ratio	16:9	
	Resolution	1920 x 1080P	
	Refresh Rate	120 Hz	
	Static Contrast	1,400:1	4,000:1
	Brightness	400 cd/m <sup>2</sup>	390 cd/m <sup>2</sup>
	Response Time	5 ms	8ms
	Viewing Angle	178°	
	Touch Screen	6 Point Infrared Touchscreen	
Power	Power Supply	100-240V ~ 50/60Hz	
	Power Consumption	58W	65W
	Stand-by Power Consumption	<0.50W	
Environment	Lead Presence	Yes	
	Mercury	0mg	
Connections	Max. Input Signal	1920 x 1080P @ 60 Hz	
	HDMI	1 x HDMI (V2.0) (HDCP 2.2) 480P/480I/576P/576I/720P/1080I/1080P/ 2160P @ 60 Hz	
	USB Media Player	2 x USB 2.0	
	LAN	1	
	WiFi	Yes	
	Digital Audio Output	1 x Co-Axial	
Speakers	Audio Out	2 x 5W	
Weight and Dimensions	Product Height	180 cm	184 cm
	Product Width	42 cm	71 cm
	Product Depth	7 cm	7 cm
	Base Height	5cm	5 cm
	Net Weight	50.5 Kg	57 Kg
	Gross Weight	88 Kg	90 Kg
	Package Dimension	217 x 29 x 86cm	220 x 76 x 96cm

\* Also available to special order in 47", 55", 65", 72" and 82" versions.





# Digital Brochure Stand

*Available with 22" or 27" screen sizes.*

Our digital brochure stand offers an attractive solution for delivering eye-catching digital content alongside traditional printed materials.

## Features:-

- Uses branded Samsung/LG LCD Panels
- Full HD Screen 1920 x 1080P
- 400cd/m<sup>2</sup> brightness
- Built-in speaker
- Built-in cooling fans
- Tempered glass above LCD panel
- Anti-theft design – built-in security lock.
- Compatible with Android/Windows OS or standalone updating via direct USB
- Supports 3G / 4G / WIFI / LAN for networking purposes.



## Specification:-

Features	Specifications	Model ID:	
		DBS-27W	DBS-27B
Colour		White	Black
Panel	Size *	27"	27"
	Aspect Ratio	16:9	
	Resolution	1920 x 1080 Pixels	
	Refresh Rate	120 Hz	
	Static Contrast	1,400:1	
	Brightness	300 cd/m <sup>2</sup>	
	Response Time	8 ms	
	Viewing Angle	178 °	
	Touch	10 Point Capacitive	
Power	Power Supply	100-240V ~ 50/60Hz	
	Power Consumption	26W	
	Stand-by Power Consumption	<0.50 W	
Environment	Lead Presence	Yes	
	Mercury	0mg	
Connections	Max. Input Signal	1920 x 1080 @ 60 Hz	
	HDMI	3 x HDMI (V 2.0) (HDCP 2.2) 480P/480i/576P/576i/720P/1080i/1080P @ 60 Hz	
	USB Media Player	2 x USB 2.0	
	LAN	1	
	WiFi	Yes	
	Digital Audio Output	1 x Co-Axial	
Speakers	Audio Out	2 x 5W	
Weight and Dimensions	Product Height	160cm	
	Product Width	45cm	
	Product Depth	5cm	
	Base Height	5cm	
	Net Weight	35kg	
	Gross Weight	60kg	
	Package Dimension	174 x 28 x 72 cm	

\* Also available to special order in a 22" version.



# Digital Poster Frame

**Our Digital Poster Frame uses the very latest technology to give it a smoother, slimmer profile and has been crafted using beautiful anodized aluminium that is both durable and lightweight. With the entire poster frame weighing less than 35Kg it is easy to install and can be portable.**

Capable of parallel processing, the system delivers a powerful video processing platform that ensures seamless delivery thanks to useful features such as screen monitoring operations and auto-detect functions that work continuously. There is no complicated configuration involved thanks to the easy-to-follow on screen menus and it's easy to identify your display and manage settings such as brightness or contrast.

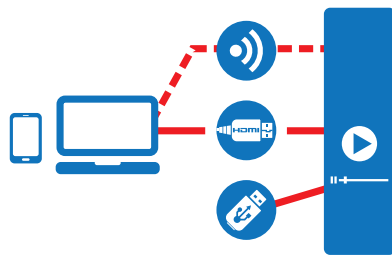
Thanks to its built-in media player, the digital content (such as video, audio or picture playlists) for these Digital Poster Frames can be updated easily via WiFi or USB at any time. The integrated software is also compatible with both PC and Android devices and can be connected via RJ45, WiFi, 3G, USB and HDMI, which enables you to play content directly from devices such as smart phones, tablets or laptops or control the content remotely from the comfort of your office.





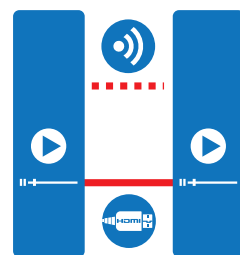
## Features:-

- The 2.5mm pixel pitch display is seamless and the absence of distracting bezels enables you to deliver digital signage content with maximum impact for a truly immersive visual experience.
- Hot swappable front access module with cableless connection so that faulty modules can be replaced from the front with no need to disconnect cabling. This uses only a handle magnet and can be done whilst the screen is running.
- Easy future upgrade to smaller pixel pitch as the technology becomes available to prolong the life of your investment.
- 5GB of internal storage means that content can be stored on the unit itself (and updated via USB/network) and supports many video and image formats.
- High Refresh Rate (>1000 Hz) for excellent image quality.
- No external PC required, which saves on cost and increases reliability as well as making the product operation simpler.
- Wall mountable brackets are available. These have a built in level and offer an easy, secure method to affix your digital poster frame to the wall in either horizontal or vertical position.
- The integrated fold-out stand offers sturdy support whilst in use as well as a discreet option to tuck it away into the groove when it isn't needed.
- Multiple setup modes offer complete versatility (see diagram below).



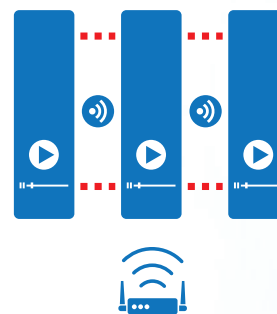
### Stand-Alone Mode

Update your digital content using our built-in media player via WiFi or USB. The built-in storage capacity of 5GB supports almost all video and image formats. There are also HDMI inputs and outputs that allow external computer synchronization using third-party media player software.



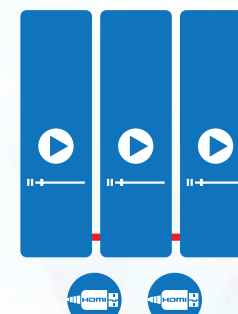
### Multi-screen Mode

Digital poster frame can be used as a video wall connected via HDMI cables or wirelessly. Be creative with Mirroring Mode or Extended Mode. Connect unlimited Digital poster frames together to create video images confined only by your imagination.



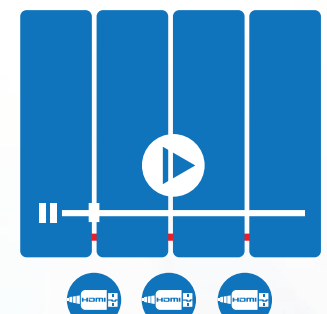
### Wireless Multi-screen Mode

Link a maximum of three digital poster frames together and stay connected via a router.



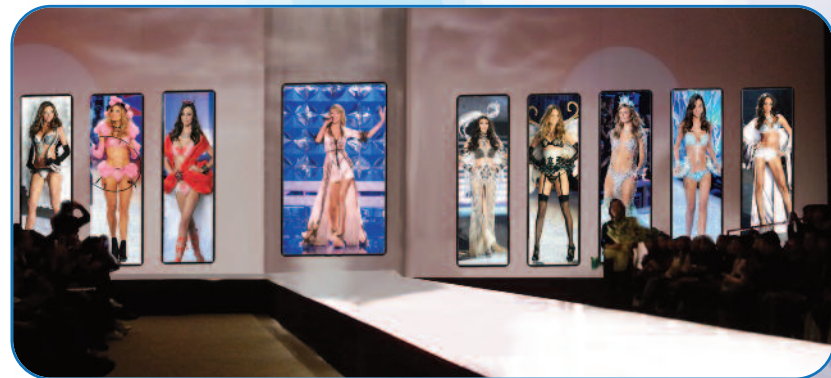
### Mirroring Mode

Show the content of one digital poster frame on the screen of another digital poster frame simultaneously.



### Extended Mode

Split and show the same video content on 2 or more digital poster frames simultaneously. Also known as cascade or split-screen mode.





Specification:-

Features	Specifications	Model ID			
		DPF01			
LED Parameters	Item	Luminous Intensity	Viewing Angle(H/V)	Wavelength	Test Condition
	Red LED	90-110 mcd	120°/120°	620-625nm	25°C,15mA
	Green LED	300-350 mcd	120°/120°	521-526nm	25°C,8mA
	Blue LED	70-80 mcd	120°/120°	470-475nm	25°C,5mA
	LED Configuration	SMD 1R1G1B 3 in 1			
	LED Shape	SMD2020			
Module Parameter	Pixel Pitch	2.571mm (H x V)			
	Module Size(WxH)	288 x 216mm			
	Module Resolution	112 x 84 Pixels			
	Drive Mode	1/28 constant scan			
Cabinet Parameter	Cabinet size(WxH)	1944 x 576mm			
	Cabinet Resolution	169,344 Pixel/m <sup>2</sup>			
	Cabinet Material	Aluminum			
	Outer Frame Color *	Black			
	Brightness	≥1200CD/m <sup>2</sup>			
	Viewing Angle	160° (V) / 160° (H)			
	Display Color	4.4 Trillion			
	Processing Depth	12 bits			
	Refresh Rate	> 1,000 Hz			
	Contrast Ratio	3,000:1			
	Operation Power	AC110/240V,50-60Hz			
	Max Power Consumption(W/pcs)	600W			
	Average Power Consumption (W/pcs)	240W			
	Display Mode	Asynchronous / Synchronous System			
	Signal Output	HDMI			
	Connection	Ethernet / WIFI / 3G			
	VGA Mode	224 x 756			
	Video File Format	MPEG / H.264			
	Operating Temperature	(-10°C~+50°C)			
	Life Span	≥100,000Hours			
Weight and Dimensions	Product Height	199 cm			
	Product Width	63 cm			
	Product Depth	3.5c m			
	Height (with Fold-out Stand)	198cm			
	Net Weight	35 kg			
	Gross Weight	70 kg			
		Package Dimension			
		212 x 35 x 82cm			

\* Also available to special order in other cabinets depths.





# Digital Signage Screens

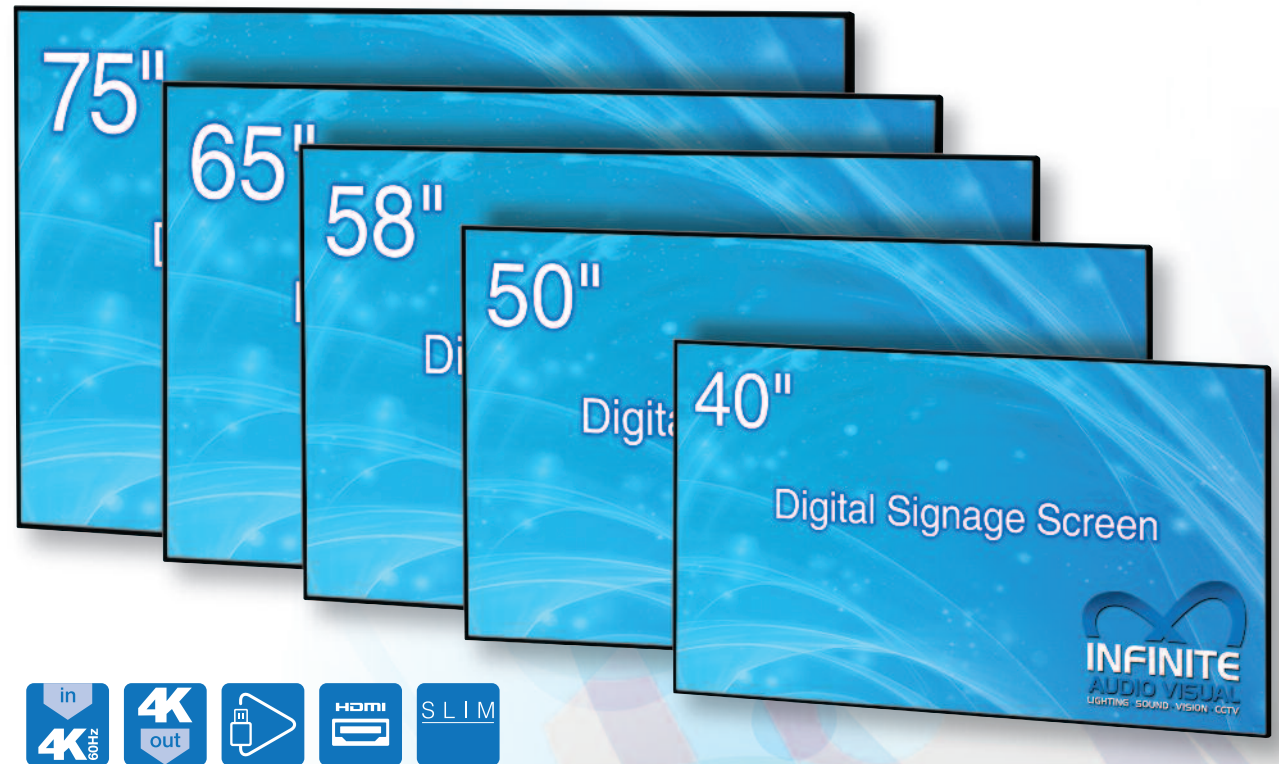
Our digital signage screens have been designed for optimum performance and functionality in everything from their electronics to their appearance.

They use the latest in high definition technology - their e-lit LED 4K Panels offer superior picture quality and great clarity. In addition, they are designed to work with most input sources and have great connectivity thanks to their 3 HDMI 2.0 inputs that support 4K 60Hz, 2 x USB 2.0 and other inputs.

Finally, narrow and symmetrical screen bezels make the image appear larger (than other screens with thicker bezels) and mean that the screen can be mounted horizontally or vertically.

## Features:

- Create playlists of images and videos for autoplay;
- TIMER for automatic on/off;
- SMART HDMI means that the screens will sleep/wakeup based on the HDMI signal status;
- Lightweight for easy, smooth wall mounting (VESA Standard).



## Specification:-

Features	Specifications	Model ID				
		DS40	DS50	DS58	DS65	DS75
Panel	Size	40"	50"	58"	65"	75"
	Aspect Ratio	16:9				
	Resolution	3840 x 2160 Pixels				
	Refresh Rate	120 Hz				
	Static Contrast	5,000:1	4,000:1	4,000:1	4,000:1	4,000:1
	Brightness	350 cd/m <sup>2</sup>	350 cd/m <sup>2</sup>	350 cd/m <sup>2</sup>	400 cd/m <sup>2</sup>	400 cd/m <sup>2</sup>
	Response Time	8.5 ms	9.5 ms	9.5 ms	6.5 ms	6.5 ms
	Viewing Angle	178/178				
Power	Power Supply	100-240V ~ 50/60Hz				
	Power Consumption	65W	110W	135W	175W	265W
	Stand-by Power Consumption	<0.50 W				
Environment	Lead Presence	Yes				
	Mercury	0mg				
	Max. Input Signal	3840 x 2160 @ 60 Hz				
Connections	HDMI	3 x HDMI (V 2.0) (HDCP 2.2) 480P/480I/576P/576I/720P/1080I/1080P/2160P @ 60 Hz				
	USB Media Player	2 x USB 2.0				
	VGA	1				
	VGA Audio In	1				
	Component	1 x YpBbPr 480P/480I/576P/576I/720P/1080I/1080P				
	AV	1				
	Digital Audio Output	1 x Co-Axial				
Speakers	Audio Out	2 x 10W				4 x 10W
Weight and Dimensions	Product Height	89 cm	112 cm	130 cm	145 cm	167 cm
	Product Width	50 cm	64 cm	75 cm	83 cm	95 cm
	Product Depth	4.2 cm	4.4 cm	3.8 cm	3.8 cm	6 cm
	Net Weight	12 kg	17 kg	27 kg	33 kg	52 kg
	Gross Weight	14 kg	20 kg	32 kg	38 kg	92 kg
	Package Dimension	102x65x11cm	121x75x14cm	140x85x19cm	157x97x21cm	189x120x23cm



# Video Wall Solutions

Our video wall solutions use **slim, lightweight edge-lit LED panels to deliver seamlessly connected, picture perfect video walls for a big impact on your audience.**

**With constantly changing content, we understand the need for a reliable and easy to control software solution that lets you communicate with remote displays in a cost-effective, time-efficient manner. Our video walls offer an intuitive Multi Display Control solution that let you control any number of screens through their embedded RJ45 interfaces.**

## 47" Ultra Slim Bezel Video Wall

Our Ultra Slim Bezel Video Wall uses a matrix of Full HD 47" LED panels alongside user-friendly software to provide a cost effective solution for eye-catching and innovative digital signage video walls with up to a 16 x 16 display and an incredibly thin bezel of just 4.9mm screen-to-screen for optimal image viewing.

### Features:-

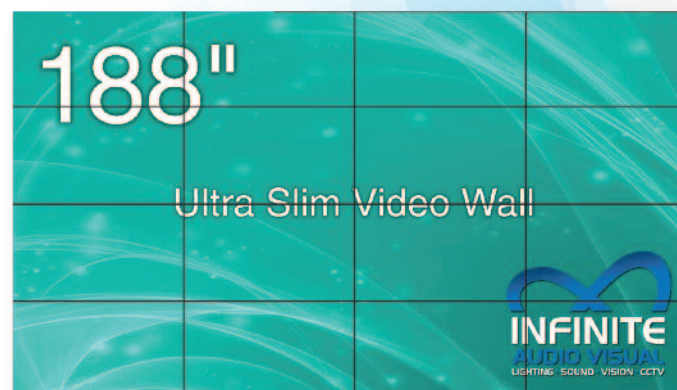
- 47" Full HD LED panels with integrated controller.
- Lightweight for easier installation and transportation
- Narrow Bezel Edge 6,6,6,8 mm (left, top, right, bottom)
- Wide range of input solutions for increased compatibility (HDMI, VGA, Component, AV and USB media player)
- VESA standard compatible for customized installation





## Specification:-

Features	Specifications	Model ID
		VWS47
Panel	Screen Size	47"
	Aspect Ratio	16:9
	Back Light Type	D-LED
	Back Light Life	> 60,000 Hours
	Screen Resolution	1920 x 1080P
	Refresh Rate	60Hz
	Static Contrast	50,000:1
	Brightness	500 cd/m <sup>2</sup>
	Response Time	12 ms
	Viewing Angle	178 / 178 (H/V)
	Horizontal Bezel (edge to edge)	4.9mm
	Vertical Bezel (edge to edge)	4.9mm
Power	Power Supply	100-240V
	Max Power Consumption	85W
	Stand-by Power Consumption	<0.50 W
Environment	Lead Presence	No
	Mercury	0Mg
Connections	Max. Input Signal	1920 x 1080P
	HDMI	1
	USB Media Player	1
	PC/VGA	1
	Head Phone	1
	Digital Audio Output	1 x Co-Axial
	Component	1
Weight and Dimensions	Product Height	590mm
	Product Width	1045mm
	Product Depth	80mm
	Net Weight	20kg
	Gross Weight	26kg
	Package Dimension (mm)	1145 x 690 x 200



## 4K Video Wall *Available in sizes from 40" to 75".*

Our 4K Video Wall uses a matrix of 4K Ultra High Definition edge-lit LED panels alongside user-friendly software to provide a cost effective solution for eye-catching and innovative digital signage with up to a 16 x 16 display and a narrow bezel edge.

### Features:-

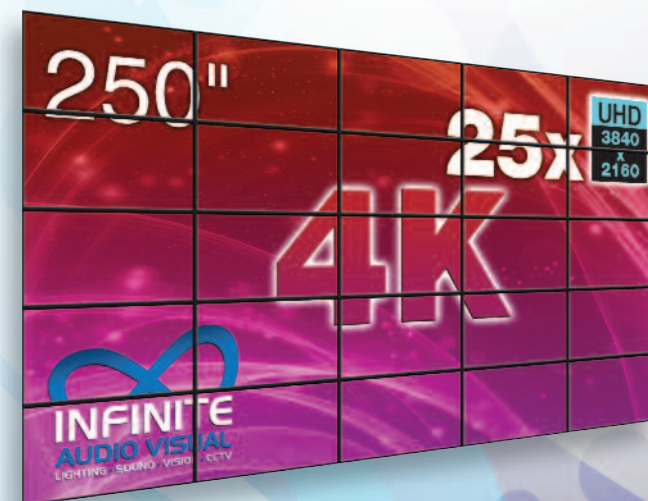
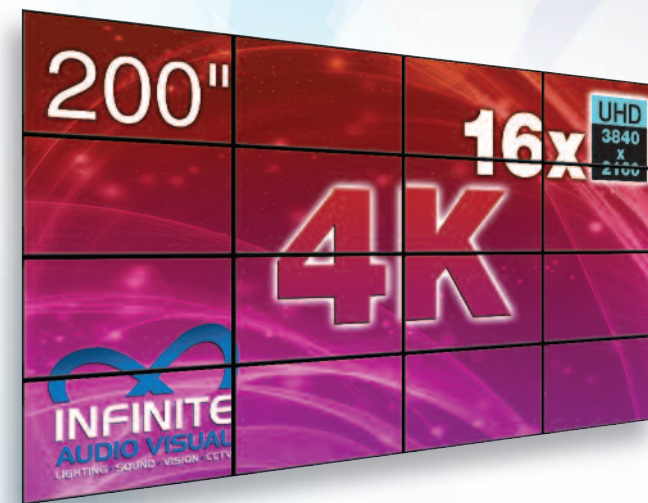
- 4K Ultra High Definition edge-lit LED panels with integrated controller.
- Lightweight for easier installation and transportation
- Narrow Bezel Edge
- Wide range of input solutions for increased compatibility (HDMI, VGA, Component, AV and USB media player)
- VESA standard compatible for customized installation





## Specification:-

Features	Specifications	Model ID				
		VW4K-40	VW4K-50	VW4K-58	VW4K-65	VW4K-75
Panel	Size	40"	50"	58"	65"	75"
	Aspect Ratio	16:9				
	Resolution	3840 x 2160 Pixels				
	Refresh Rate	120 Hz				
	Active Area	878 x 485mm	1095 x 616 mm	1270 x 721 mm	1428 x 803 mm	1650 x 928 mm
	Static Contrast	5,000:1	4,000:1	4,000:1	4,000:1	4,000:1
	Brightness	350 cd/m <sup>2</sup>	350 cd/m <sup>2</sup>	350 cd/m <sup>2</sup>	400 cd/m <sup>2</sup>	400 cd/m <sup>2</sup>
	Response Time	8.5 ms	9.5 ms	9.5 ms	6.5 ms	6.5 ms
Power	Viewing Angle	178/178				
	Power Supply	100-240V ~ 50/60Hz				
	Power Consumption	65W	110W	135W	175W	265W
Environment	Stand-by Power Consumption	<0.50 W				
	Lead Presence	Yes				
	Mercury	0mg				
Connections	Max. Input Signal	3840 x 2160 @ 60 Hz				
	HDMI	3 x HDMI (V 2.0) (HDCP 2.2) 480P/480i/576P/576i/720P/1080i/1080P/2160P @ 60 Hz				
	USB Media Player	2 x USB 2.0				
	VGA	1				
	VGA Audio In	1				
	Component	1 x YpBbPr 480P/480i/576P/576i/720P/1080i/1080P				
	AV	1				
	Digital Audio Output	1 x Co-Axial				
	Remote Control	Infrared remote control input				
	RS232 In/Out	Yes (RJ45 Interface)				
Speakers	Audio Out	2 x 10W				4 x 10W
Bezel	Vertical	12mm	12mm	16mm	16mm	16mm
	Horizontal	16mm	16mm	20mm	20mm	20mm
Screen Edge	Left-Top-Right-Bottom	6-6-6-10 mm	6-6-6-10 mm	8-8-8-12mm	8-8-8-12mm	8-8-8-12mm
Weight and Dimensions	Product Height	504 mm	639 mm	745 mm	829 mm	951 mm
	Product Width	892 mm	1116 mm	1295 mm	1450 mm	1670 mm
	Product Depth	42 mm	44mm	38 mm	38 mm	60 mm
	Net Weight	12 kg	17 kg	27 kg	33 kg	52 kg
	Gross Weight	14 kg	20 kg	32 kg	38 kg	92 kg
	Package Dimension	102x65x11cm	121x75x14cm	140x85x19cm	157x97x21cm	189x120x23cm





## Contact Us

Infinite Audio Visual  
Ransom Hall South  
Ransom Wood Business Park  
Mansfield, Notts  
NG21 0HJ

T: 01623 859222

W: [www.infiniteaudiovisual.co.uk](http://www.infiniteaudiovisual.co.uk)

E: [info@infiniteaudiovisual.co.uk](mailto:info@infiniteaudiovisual.co.uk)

